

BLACK JACK PEE WEE ENDURO CIRCUIT

2013 Schedule:

March 23, White Rock **KIDS ENDURO** Combs, AR

April 13, Indian Nations **KIDS ENDURO** Scipio, OK

2 races same day!

May 4, Hardwood **KIDS ENDURO** Mansfield, MO

June 23, Golden Eagle **KIDS ENDURO** Stillwater, OK

4 out of the 5 races count for end of year awards

BLACK JACK PEE WEE ENDURO CIRCUIT

2013



**BLACK JACK PEE WEE
ENDURO CIRCUIT
SPONSORS**

**BUFFINGTON
C O M P A N Y**

GENERAL CONTRACTORS
2108 N. WILLOW
BROKEN ARROW, OK
918-749-2538

<http://www.buffingtoncompany.com/>

Buffington built the building for our next sponsor:



Honda of Tulsa
www.hondaoftulsa.com
918-744-5551

Yellow Wood Photography
Uncommon Everyday Images

Andy M. Stevens

andy@yellowwood.us
143 W. Park St. Gardner, KS 66030
913-998-5101

yellowwood.us

**BLACK JACK PEE WEE
2012 YEAR END
AWARD WINNERS**

6 and Under	
Place	Rider
1	Jackson Martin
2	Anthony Knight
3	Gunnar Kyle
4	Caleb Martin
5	Harrison Martin

7 and 8	
Place	Rider
1	Alex Key
2	Nathan Cordova
3	Raegan Pratt
4	Joey Sparks

9 to 11 Small Wheel	
Place	Rider
1	Garrett Jones
2	Alex Cramer
3	Brant Whitaker
4	Ty Johns
5	Catherine Pitts
6	Jacob York
7	Natalie Knight
8	Zachary Cobb

9 to 11 Large Wheel	
Place	Rider
1	Nathan Rector
2	Wyatt Schaffitzel
3	Austin Pratt
4	Brady Key
5	Cody Ogden

VIII. Classes

1. The classes shall be based on age and shall be as follows:
 - a. 6 & under
 - b. 7-8
 - c. 9-11 Small Wheel (12 x 14" max)*
 - d. 9-11 Large Wheel (16 x 19" max)*
2. Age for the class is based on the entrants' age as of **January 1**. For the safety and enjoyment of all participants, only those racing in their respective age group will be permitted on the course during the race. Participants may only enter the **one** age group they are qualified for.

IX. Safety

1. All participants must wear safety gear to include, but not limited to: helmet, protective boots (over the ankle), long pants, eye protection, and gloves.
2. To ensure the safety of all racers, trail courtesy will be enforced. If a rider catches you, you must let him/her pass.
3. Demonstrate good sportsmanship by encouraging others. Always be willing not only to help others improve their riding, but also to learn at every opportunity.
4. Have fun.
5. The only adult riders allowed on the course in the 6 and under races will be the host club's designated sweep or chase riders.

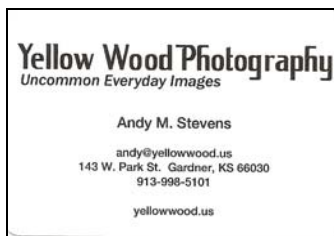
FLATLAND
RACING

At FLATLAND RACING we are continuously developing new products and ideas specially tailored to today's off-road riders. Flatland Racing Specializes in making products for KTM, YAMAHA, and GAS GAS bikes. See what we have to offer enduro riders at our website:

<http://flatlandracing.com/>



knmotorcycles.com



S & R
VINTAGE PARTS

Stephen Pitts
918-557-5496
Ricky Pitts
918-510-4446

S & R Vintage Parts
Collinsville, OK
rdpitts56@yahoo.com
Find us on Ebay
aquaman918/S&R Vintage Parts

Earl Schnell. (Individual) "Special thanks to long time BJEC rider Earl Schnell for being a sponsor."



Honda of Tulsa
Sportscenter

Supporting the sport for over 30 years

 **21st & Yale**
Tulsa, OK
918-744-5551
www.hondaoftulsa.com



OKLAHOMA'S ORIGINAL KTM DEALER

FLATLAND
RACING



K&N Motorcycles
and ATV Center

America's Oldest Yamaha Dealer - Established in 1957

6105 NEW SAPULPA ROAD
TULSA, OKLAHOMA
www.knmotorcycles.com



VII. Scoring

1. Circuit points for each event will be awarded as follows:

- 1st Place - 20 points
- 2nd Place - 19 points
- 3rd Place - 18 points
- 4th Place - 17 points
- 5th Place - 16 points
- 6th Place - 15 points
- 7th Place - 14 points
- 8th Place - 13 points
- 9th Place - 12 points
- 10th Place - 11 points
- 11th Place - 10 points
- 12th Place - 9 points
- 13th Place - 8 points
- 14th Place - 7 points
- 15th Place - 6 points
- 16th Place - 5 points
- 17th Place - 4 points
- 18th Place - 3 points
- 19th Place - 2 points
- 20th Place - 1 point

2. Circuit points will be awarded based on the total number of races for each season. Approximately 75% of the races will be scored for each rider, the exact number to be determined by the BJEC PW Chairman. The number of points awarded for each event will be added for a year-end score. Participants must start each race for it to be counted towards year-end circuit points.
3. Year end awards will be made available to all riders who are awarded points in approximately 75% of the scheduled events with the exact number of minimum races to be determined by the BJEC PW Chairman. Places will be determined by year-end scores, with the highest score being awarded first place.
4. If any class standings have a tie at the end of the year, it will be broken by who has the most event first places. If a tie still exists, it will be broken by who has the most second, third, etc., places until the tie is broken. Should the tie not be broken within 70% of the races, two (2) trophies will be awarded for that place and the next place will not be awarded. For example, if a tie exists for first, two (2) trophies would be awarded for first and there would be no second place.

Honda of Tulsa
Sportscenter

918-744-5551 Ext. 211
Fax 918-744-1356

4926 East 21st
Tulsa, OK 74114

www.hondaoftulsa.com

BUFFINGTON
COMPANY

Black Jack Pee Wee Enduro Circuit 2013 Rules

I. Purpose

Promote family participation in activities that teach sportsmanship and leave each participant with a sense of accomplishment and pride, while developing motorcycle riding skills they can use to become faster than their parents.

II. Organization

The organization of the **BLACK JACK PEE WEE ENDURO CIRCUIT** will be comprised of the BJEC Circuit Committee (see BJEC rules) and a BJEC PW Chairman. Together these officers will compromise the BJEC PW Circuit Committee. The BJEC PW Chairman will be responsible for continual development and growth of the BJEC PW and all decisions pertaining to the circuit not currently addressed in the defined rules. Rule changes will be voted on by the BJEC PW Circuit Committee and must be approved by a majority of the members. The votes may take place electronically or verbally and records on rules additions or changes should be maintained on file by the BJEC PW Chairman.

III. Meetings

As per the BJEC rules.

IV. Financial

1. The BJEC PW is a part of the BJEC and shall be operated as such (see BJEC rules) except as noted.
2. Rule 3 of BJEC Financial shall not apply.
3. The entry fees should not exceed \$10. All entry fees are retained by the sponsoring clubs.

V. Membership

Members may join BJEC PW by registering through the BJEC PW Chairman at any BJEC PW sponsored event. Membership fees are \$10 per season.

VI. Event

1. BJEC PW races shall be held the Saturday prior to a BJEC Sunday enduro. In the event of a two day enduro where a BJEC race is held on a Saturday and Sunday of the same weekend, the BJEC PW race will remain a Saturday event.
2. Race format, scoring details, etc will be determined by the hosting club.



BLACK JACK PEE WEE ENDURO CIRCUIT OFFICERS

RICKY PITTS

COLLINSVILLE, OK

BLACK JACK PEE WEE ENDURO CIRCUIT
CHAIRMAN

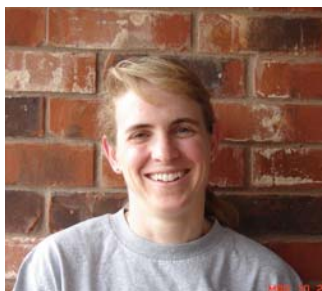


After a start in motocross at 16, Ricky has been around enduros since he was 20. The last few years he has been sponsor/mechanic/trainer/pit crew for his four (yup, count 'em...FOUR) sons who race. Ricky, with the aid of his wife, Therese, started the peewee enduro circuit in 2006 and they remain the reason for its success.

REBECCA HINKLE

OKLAHOMA CITY, OK

BLACK JACK PEE WEE ENDURO CIRCUIT
VICE CHAIRMAN



As a new rider, Rebecca ran into some BJEC racers during a trail ride in the fall of 1999. A local event (the Crosstimbers Enduro) was coming up and the BJEC members talked her into racing. She got a trophy.... And an expensive addiction.

THERESE PITTS

COLLINSVILLE, OK

BLACK JACK PEE WEE ENDURO CIRCUIT
SCORING OFFICER



Married to Ricky Pitts and has five of seven children and one grandson racing. She helped Ricky get the peewee enduro circuit started in 2006. She enjoys going to the races and doing the pee wee scoring.

New Pee Wee Sponsors for 2013

Earl Schnell. (Individual) "Special thanks to long time BJEC rider Earl Schnell for being a sponsor."

